

Special Issue: The Democrats

TIME



★ THE DEMOCRATS

# The Family Obama

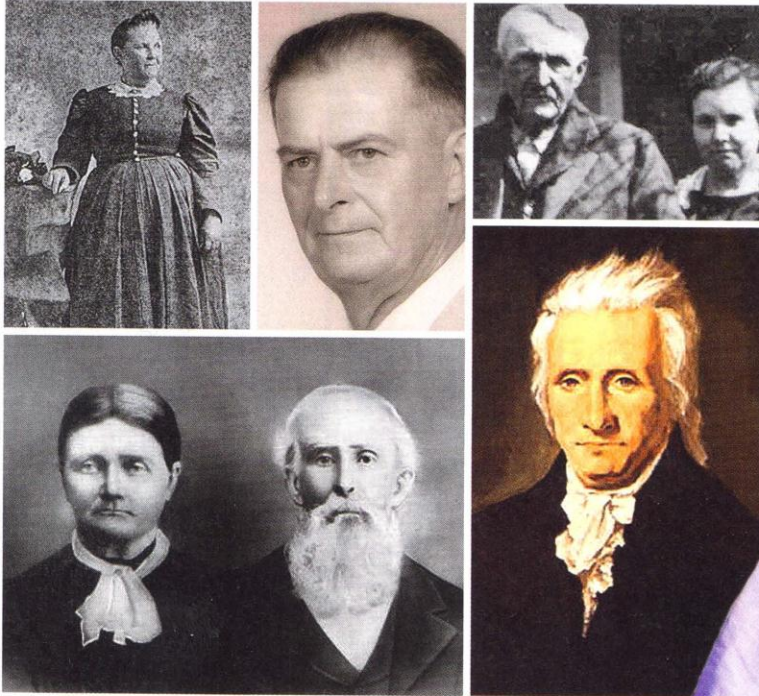
With roots in Kansas, Kenya and beyond, the candidate is a genealogist's fantasy

BY AMANDA RIPLEY



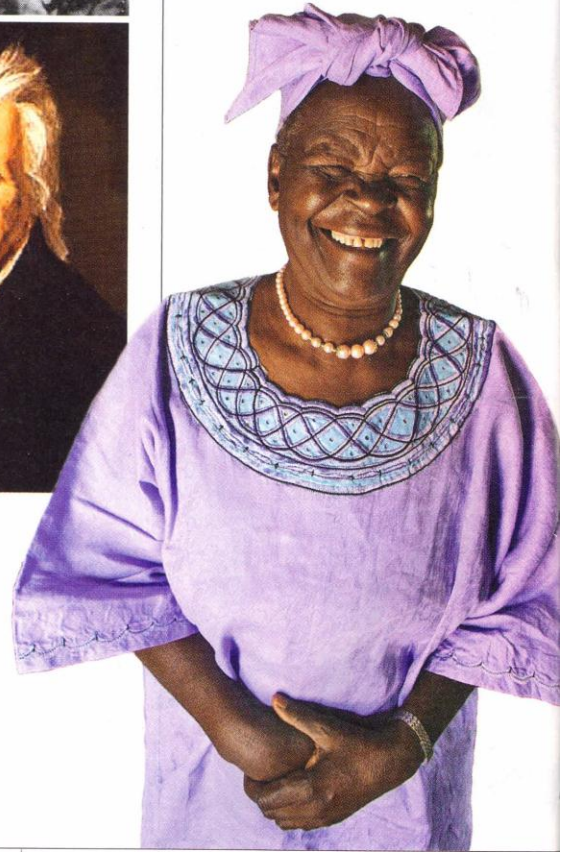
## Grandparents

Stanley and Madelyn Dunham raised Obama during his teens while his mother was working in Indonesia. Born in Kansas, the grandparents lived in four states before settling in Hawaii. Their prairie stoicism was offset by a wide-open curiosity about the world. In Kenya, **Sarah Obama**, below, raised Obama's father. Obama has visited her several times.



## Ancestors

Obama's family tree has deep roots in American history. Distant cousin **Gabriel Duvall**, lower right, was a Supreme Court Justice, a friend of Thomas Jefferson's and the owner of 37 slaves. Obama also comes from a long line of farmers, including great-great-great-grandparents **Jacob Mackey Dunham** and **Louisa Eliza Stroup Dunham**, lower left, in Indiana and great-great-grandparents **Thomas Creekmore McCurry** and **Margaret Belle Wright McCurry**, top right, in Kansas. Great-grandfather **Ralph Waldo Emerson Dunham Sr.**, top middle, named after the poet, was a Kansas mechanic. During the Civil War, great-great-great-grandmother **Elizabeth Edna Creekmore McCurry**, top left, lost a son to Confederate raiders.



## A Common Gene Pool

Obama is distantly related to Vice President Dick Cheney and President George W. Bush, going back to the 1600s.



## True Hawaiian

Obama, his mother and her parents had a strong bond to Hawaii—a diverse and largely tolerant place where he spent most of his youth.



ANCESTORS: GRANDPARENTS, LOLO SOETORO; ANN DUNHAM & BARACK SR., STANLEY & BARACK JR.; COURTESY OF OBAMA FOR AMERICA (5); SARAH OBAMA: PAULA BRONSTEIN—GETTY; ANN DUNHAM: COURTESY OF NANCY PELUSSO; KEZIA OBAMA: REX USA; BARACK SR.: BEN CURTIS—AP; AUMA OBAMA: M. SPENCER GREEN—AP; MALIK OBAMA: KARL PRINSLOO—AP; MAYA: CHICK BERMAN—CHICAGO TRIBUNE/MCT; MICHELLE OBAMA: CHIP SOMODEVILLA—GETTY; MARIAN ROBINSON: JOHN GRESS—WPN; DAUGHTERS: SCOUT TUFANKJIAN—POLARIS; CHENEY: EVAN YUCCI—AP; BUSH: GERALD HERBERT—AP; SIGNATURE: CALLIE SHEL—AURORA FOR TIME

Source for ancestors (above): Chicago Sun-Times